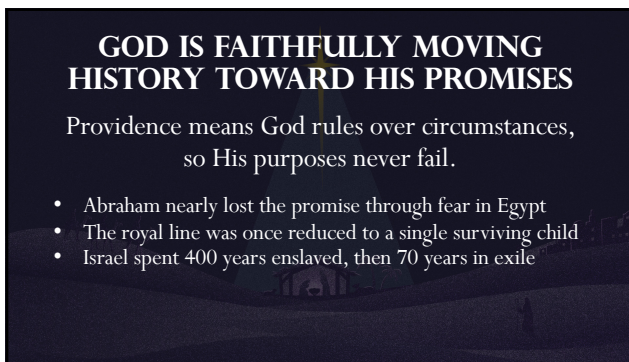
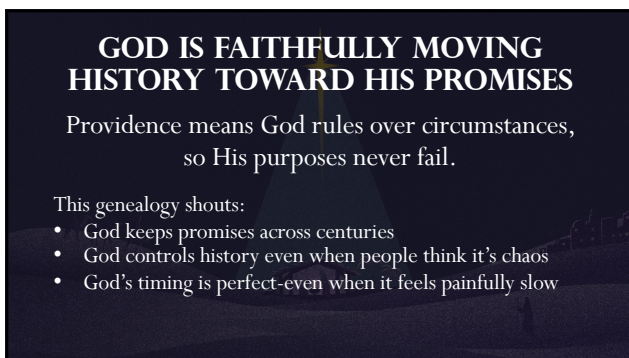




1



2



3

JESUS IS THE SAVIOR FOR ALL PEOPLE

Tamar — incest and scandal
 Rahab — a prostitute
 Ruth — a Moabite foreigner
 Bathsheba — labeled by her sin with David

4

GOD CARRIES OUT HIS PERFECT PLAN THROUGH BROKEN PEOPLE

This genealogy declares:

- Sin never stopped God's plan
- Failure never canceled God's promise
- God redeems broken people
- God invites outsiders
- God uses scandal, sin, and shame to bring about salvation

5

**GOD ALWAYS KEEPS HIS PROMISES-
EVEN WHEN EVERYTHING SEEMS
TO WORK AGAINST THEM.**

6
